

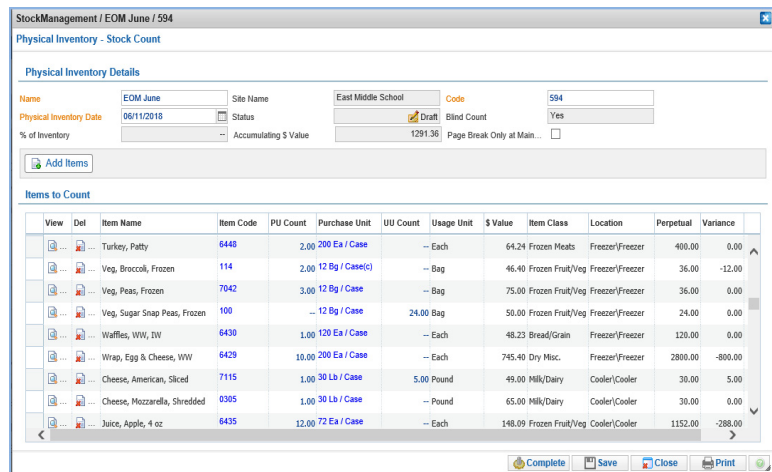
Physical Inventory Counts and Valuation Reporting

Inventory Counts and Valuation is a great place to get started with TrakNOW. Jump right in by importing items from your prime vendor or enter your items through a convenient on-screen wizard and you are ready to go.

Accurate Counts!

Custom design count sheets

- ✓ Design centrally or by school site
- ✓ Option to require “blind” counts
- ✓ % of inventory spot counts
- ✓ Count by active items
- ✓ Add items to sheet by location, class, category, alpha, code, predefined list, etc.
- ✓ View item supply definitions with one click of your mouse
- ✓ Sort by location, shelf order, alpha, code, class, etc.
- ✓ Move items up and down the list using arrow buttons to create any order
- ✓ Print count sheets to match screens for accurate data entry
- ✓ Supports Supervisor and/or District Approval of submitted counts.



Add Value

Print count sheets to match screens for accurate entry

traknow									
Physical Inventory									
Site: Main High School									
Date: 4/22/2009									
Name: Spot Inventory Count									
Blind Count: Yes									
Status: Draft									
Item Name	Item Code	Purchase Unit	PU Count	Usage Unit	UU Count	Item Class	Location	Variance	Perpetual
Cheese, Cheddar, Shredded, Reduced Fat	221	30 Lb / Case		Pound		Milk/Dairy	Cooler/Cooler	N/A	N/A
Juice, Orange, 4 fl oz cartons	217	48 Ea / Case		Each		Frozen Fruit/Veg	Cooler/Cooler	N/A	N/A
Mayonnaise, Reduced Calorie, Bulk	215	4 G1 / Case		Gallon		Condiment/Sauce	Cooler/Cooler	N/A	N/A
Milk, Chocolate, 1%, 8 oz Cartons	213	50 Ea / Case		Each		Milk/Dairy	Cooler/Cooler	N/A	N/A
Milk, White, 1%, 8 oz Cartons	203	50 Ea / Case		Each		Milk/Dairy	Cooler/Cooler	N/A	N/A
Prod. Apples, Red, Fresh	211	138 Ea / Case		Each		Produce	Cooler/Cooler	N/A	N/A
Prod. Banana, Fresh	210	120 Ea / Case		Each		Produce	Cooler/Cooler	N/A	N/A
Prod. Carrots, Baby, Indv. Bags	214	100 Bg / Case		Bag		Produce	Cooler/Cooler	N/A	N/A
Prod. Lettuce, Shredded Iceberg, 5# Bags	216	4 Bg / Case		Bag		Produce	Cooler/Cooler	N/A	N/A
Prod. Peppers, Green Bell, Fresh	222	2 Bg5 / Case		Bag 5 Lb		Produce	Cooler/Cooler	N/A	N/A
Prod. Tomatoes, Fresh	206	20 Lb / Case		Pound		Produce	Cooler/Cooler	N/A	N/A
Tortillas, Flour, 6", 9 oz each	208	12 Dz / Case		Dozen		Bread/Grain	Cooler/Cooler	N/A	N/A
Tortillas, Flour, 8", 1.5 oz each	209	12 Dz / Case		Dozen		Bread/Grain	Cooler/Cooler	N/A	N/A
Yogurt, Strawberry, Individual Cups	218	48 Ea / Case		Each		Milk/Dairy	Cooler/Cooler	N/A	N/A

Hide or display theoretical perpetual inventory and variance

- ✓ Enter counts in Purchase Units
- ✓ Enter counts in Usage Units
- ✓ Enter counts in any Purchase Unit contained in the purchase history and TrakNOW will recognize it

All the tools you need to organize your inventory

Home > Catalog > Item Class Maintenance

Add Edit Delete Link Items Print

Class	
Name	Code
Central Schools	10
Food	1
Dry	60
Spices, baking, etc	600
Condiment/Sauce	601
Bread/Grain	602
Dry Misc.	603
Commodities	70
Meat/Alternate	10
Entrees	20
Fruits/Vegetables	30
Snacks/Ala Carte	40
Dairy	50
Non-Food	2
Small Equipment/Ware	3
Chemical/Paper	80

Items - Bread/Grain	
Name	Code
100% Whole Wheat Bagel, 2.5 oz, IW	8482
Bread, Bagels, Cinnamon Raisin, WW	6414
Bread, Bagels, Plain, WW	5-6411
Bread, Bun, Hamburger, WW	342

Four levels of Accounting Classifications for organizing inventory valuation and asset reporting, usage analysis, bid grouping, purchasing and receiving.

Inventory can reside in multiple locations for convenient and accurate count sheets printed by location.

Home > Inventory Management > Location Hierarchy Maintenance

Add Edit Delete Link Items Print

Lines	
Name	Code
Warehouse	8
Freezer	
Cooler	Cooler
Aisle 1	A1
Shelf 1	S1
Bin 1	B1
Aisle 2	A2
Dry Storage	Dry Storage
Wares & Equip	Wares & Equip

Items - Bin 1	
Name	Code
Cheese, American, Sliced	7115
Cheese, Cheddar, Block	7110
Cheese, Monterey, Block	42155
Cheese, Mozzarella, Shredded	2-0305
Cheese, Swiss, Sliced	7114
Cream Cheese, Bulk	6415
Cream Cheese, Packet	6470

Display variances to double check count entry and select valuation methods and select options to display weighted average, FMV, brokerage, processing, storage, and pass through (net off invoice) values.

Inventory Variance Report

Site Name: Main High School

Physical Inventory Name: Spot Inventory Count Physical Inventory Date: 4/22/2009 Blind Count Yes:

Item Name	Code	Class	Purchase Unit	Perpetual		Actual		Count	Value	Count	Value	Count	Value
				Count	Value	Count	Value						
Cheese, Cheddar, Shredded, Reduced Fat	221	Milk Dairy	30 Lb / Case	0.00	\$0.00	1.17	\$76.05	-1.17					
Juice, Orange, 4 fl oz cartons	217	Frozen Fruit/Veg	48 Ea / Case	0.00	\$0.00	0.46	\$4.37	-0.46					
Milk, Chocolate, 1%, 8 oz Cartons	213	Milk Dairy	50 Ea / Case	25.00	\$300.00	2.20	\$26.40	22.80					
Milk, White, 1%, 8 oz Cartons	203	Milk Dairy	50 Ea / Case	15.00	\$180.00	1.68	\$20.16	13.32					
Prod. Apples, Red, Fresh	211	Produce	138 Ea / Case	0.00	\$0.00	3.00	\$94.00	-3.00					
Prod. Bananas, Fresh	210	Produce	120 Ea / Case	0.00	\$0.00	0.63	\$14.40	-0.63					
Prod. Carrots, Baby, InPkg, Bags	214	Produce	100 Bg / Case	0.00	\$0.00	3.00	\$60.00	-3.00					
Prod. Lettuce, Shredded Iceberg, 5# Bags	216	Produce	4 Bg / Case	0.00	\$0.00	3.25	\$32.50	-3.25					
Prod. Peppers, Green Bell, Fresh	222	Produce	2 Bg5 / Case	0.00	\$0.00	0.50	\$8.00	-0.50					
Prod. Tomatoes, Fresh	206	Produce	20 Lb / Case	0.00	\$0.00	5.00	\$160.00	-5.00					
Tortillas, Flour, 6", 9 oz each	208	Bread/Grain	12 Dz / Case	0.00	\$0.00	2.00	\$130.00	-2.00					
Tortillas, Flour, 8", 1.5 oz each	209	Bread/Grain	12 Dz / Case	0.00	\$0.00	2.50	\$175.00	-2.50					
Yogurt, Strawberry, Individual Cups	218	Milk Dairy	48 Ea / Case	0.00	\$0.00	5.00	\$48.00	-5.00					
Bread, Bun, Hamburger, 4" Sliced	342	Bread/Grain	12 Pkg / Case	10.00	\$35.00	0.50	\$1.75	9.50					
Bread, Sliced Loaves, Wheat	357	Bread/Grain	8 Lf / Case	15.00	\$150.00	2.00	\$20.00	13.00					
Chem. Bleach	600	Chemical	6 Gl / Case	1.00	\$15.00	0.33	\$4.95	0.67					
Chem. Oven Cleaner	601	Chemical	12 Cn / Case	0.00	\$0.00	0.17	\$5.10	-0.17					
Chem. Pds, Steel Wool	602	Chemical	12 Bx / Case	2.00	\$50.00	0.42	\$10.50	1.58					
Cups, Cheetos, Baked	356	Snacks	104 Ea / Case	0.00	\$0.00	2.12	\$49.82	-2.12					

Inventory Valuation

Criteria :
Price Calculations : Use Average Price
Costs Displayed : Purchase Price
Site : Main High School
Date : 04/22/2009
Site Name: Main High School
*** - Commodities blended with purchased items possibly reflected in this value.

Item Name	Code	PU Unit	Qty	Value	Commodity FMV
Non-Food					
Chemical/Paper					
Paper Goods					
Paper, Napkin	502	12 Ea / Case	3.00	\$90.00	
Paper, Trays, Foam, 5 Compartment	500	500 Ea / Case	1.00	\$25.00	
Paper Goods total.			4.00	\$115.00	
Chemical					
Chem, Bleach	600	6 Gl / Case	0.33	\$5.00	
Chem, Oven Cleaner	601	12 Cn / Case	0.17	\$0.00	
Chem, Pds, Steel Wool	602	12 Bx / Case	0.42	\$10.42	
Chemical total.			0.92	\$15.42	
Chemical/Paper total.			4.92	\$130.42	
Non-Food total.			4.92	\$130.42	
Total:			40.63	\$198.73	
Grand Total:			40.63	\$198.73	